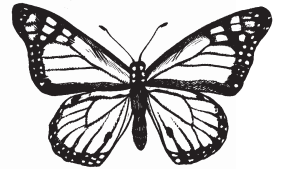


# Monarchs & Migrants Weekend at Presqu'île



## Friday September 3

CHILDREN'S PROGRAM

### Wacky Waterfowl

Ducks, Geese and Swans will soon be heading south. Find out more about these birds.

2:00 p.m.

Nature Centre

EVENING PROGRAM

### Migration and You

Find out about the amazing story of bird and insect migration and how you can get involved!

8:00 p.m.

Amphitheatre

## Saturday September 4

DEMONSTRATION

### Bird Banding

This is a weather-dependent event.

Drop by for a close-up look at migrating marvels with certified bird bander Elizabeth Kellogg.

8:00 a.m. to 12:00 p.m.

Entrance to Owen Point Trail parking lot

GUIDED WALK

### Bird Walk

Join David on this search for Presqu'île's resident and migrant birds along the shore.

10:00 a.m.

Owen Point Trail parking lot

DEMONSTRATION

### Monarch Tagging

Drop by and help expert tagger Don Davis send some migrants on their way!

1:00 p.m. to 3:00 p.m.

Outside the Lighthouse Interpretive Centre

CHILDREN'S PROGRAM

### Winged Wonder

Marvel at the Monarch butterfly and its migration to Mexico and back!

3:00 p.m.

Nature Centre

GUIDED WALK

### Butterfly Flutter By

Come and discover Presqu'île's majestic winged wonders - the butterflies!

4:00 p.m.

Nature Centre

EVENING PROGRAM

### The Time Machine

Join Dr Emmitt as he travels back in time to explore Presqu'île History. What does that have to do with migration? Come out and see!

7:30 p.m.

Amphitheatre

## Sunday September 5

DEMONSTRATION

### Bird Banding

This is a weather-dependent event.

Drop by for a close-up look at migrating marvels with certified bird bander Elizabeth Kellogg.

8:00 a.m. to 12:00 p.m.

Entrance to Owen Point Trail parking lot

GUIDED WALK

### Bird Walk

Join Allyson and David on this search for Presqu'île's resident and migrant birds along the shore.

10:00 a.m.

Owen Point Trail parking lot

DEMONSTRATION

### Monarch Tagging

Drop by and help expert tagger Don Davis send some migrants on their way!

1:00 p.m. to 3:00 p.m.

Outside the Lighthouse Interpretive Centre



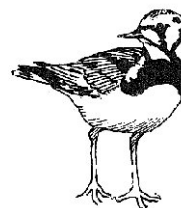
GUIDED WALK

### Bird Walk

Last chance to see what's at Presqu'île on this search for resident and migrant birds along the shore.

4:00 p.m.

Owen Point Trail parking lot



I migrate too you know!

